



OPTOMX®

Up to 2-in-1 High Performance External IP67 Antenna

A rugged outdoor antenna, OPTOMX is designed to provide high performance connectivity for wireless machine to machine applications. This antenna mounts to virtually any M2M or IoT enabled asset and requires no servicing through its lifetime.

FEATURES

- Up to 2 x Wideband Cellular LTE elements with powerful MIMO technology that operate over multiple bands in one IP67 rated housing
- Available in black or white

ADVANTAGES

- High gain provides bigger cellular footprint
- 5 year limited warranty included¹
- Covered by one or more patents and pending applications²

¹See terms and conditions at airgain.com/antenna-plus-support/

²For a list of the patents covering this product please visit <https://airgain.com/product-support/patents/>

PART NUMBER(S)

| CONFIGURATION | CELLULAR ELEMENTS | Wi-Fi ELEMENTS | GNSS | PART NUMBER | DESCRIPTION |
|-----------------|-------------------|----------------|------|-----------------------|---|
| 2-in-1 | 2 | 0 | No | AP-M2M3-CC-Q-S22-BL-6 | MIMO Cell/LTE x 2, Threaded bolt mount, SMA x 2, Black, 6 feet coax |
| Single Cellular | 1 | 0 | No | AP-M2M3-C-Q-S2-BL-6 | Cell/LTE x 1, Threaded bolt mount, SMA x 1, Black, 6 feet coax |

TECHNICAL SPECIFICATIONS

ELECTRICAL

| | | |
|--------------------------|--------------------|-----------------------|
| Frequency Range | Elements 1 up to 2 | 689-960/1700-2700 MHz |
| Operational Bands | Elements 1 up to 2 | LTE/Cellular |
| Peak Gain: Isotropic | Elements 1 up to 2 | 698-960 MHz, 3.5 dBi |
| | | 1710-2700 MHz, 5 dBi |
| Isolation | Elements 1 up to 2 | >10 dB |
| Correlation Co-efficient | Elements 1 up to 2 | <0.3 |

ENVIRONMENTAL

| | | |
|---------------------------|---|--|
| Hazardous Substances | RoHS Compliant | |
| Temperature | -40°C to 65°C (-40°F to + 149°F) Operating and Storage conformance to IEC 60068 | |
| Humidity (Non-Condensing) | 5% to 96% Operating and Storage conformance to IEC 60068 | |
| Water Ingress | IP67 | |
| Military Spec | MIL-STD 810 conformance to vibration | |

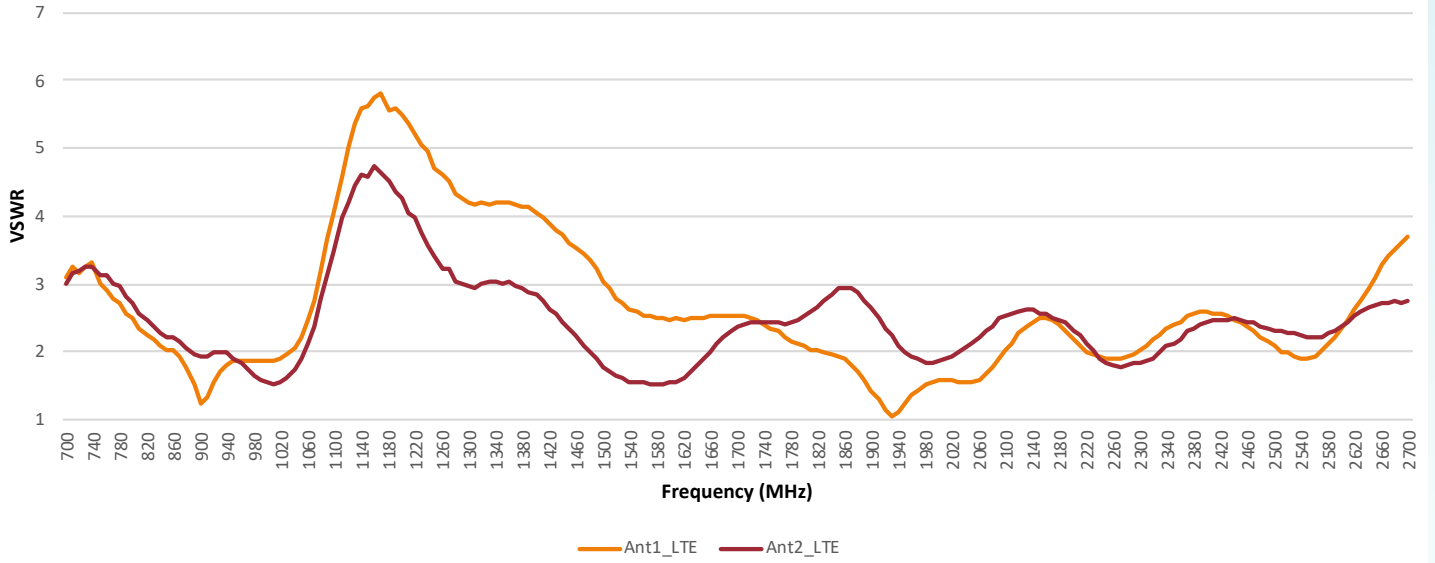
MOUNTING

| | | |
|------------|--------------------------|----------------|
| Dimensions | Height | 3.62" (92mm) |
| | Diameter | 2.49" (63.3mm) |
| Color | Black (BL) or White (WH) | |

CABLE

| | | |
|------|-------------|------------------|
| Cell | Type | LMR-195 Low Loss |
| | Diameter | 0.195" (4.953mm) |
| | Length | 1 ft (0.3m) |
| | Termination | SMA Male |

VSWR of LTE Antennas



Isolation of LTE Antennas

